

Specialisations offered by Babeş-Bolyai University

ADMISSION

2026

Undergraduate level



UNIVERSITATEA BABEŞ-BOLYAI
UNIVERSITÄT BUDAPESTEN
BÁBEŞ-BOLYAI EGYETEM
BABEŞ-BOLYAI UNIVERSITY
www.babes-bolyai.ro

UBB,

*your choice
for the future!*

This brochure lists the specialisations offered by Babeş-Bolyai University at undergraduate level for the 2026 admission.

Further information on the admission is available at infoadmitere.ubbcluj.ro/. Please access from this website both the general information on the admission procedure, and the information pertaining to specialisations. The information can be accessed on the main page from the "FACULTIES" menu. For further details, information on bibliography, specific criteria and tie-breaker criteria please visit the faculties' websites. The number of places – state funded and on tuition – is released by the Ministry of Education and by the University after the publication of this informative brochure.

Any updates to the present material, provided further regulations are issued by the Ministry of Education, respectively following the authorisation of new specialisations, will be promptly disseminated via all available means. The responsibility passes on the Admission Committees at the faculties and the Communication and Public Relations Department.

Edited by the
Rector's Office of Babeş-Bolyai University
Address: 1 Mihail Kogălniceanu Street,
Cluj-Napoca, 400084
Tel.: 0264-405.300
Fax: 0264-591.906
E-mail: iulia.grecu@ubbcluj.ro
Internet: ubbcluj.ro
infoadmitere.ubbcluj.ro

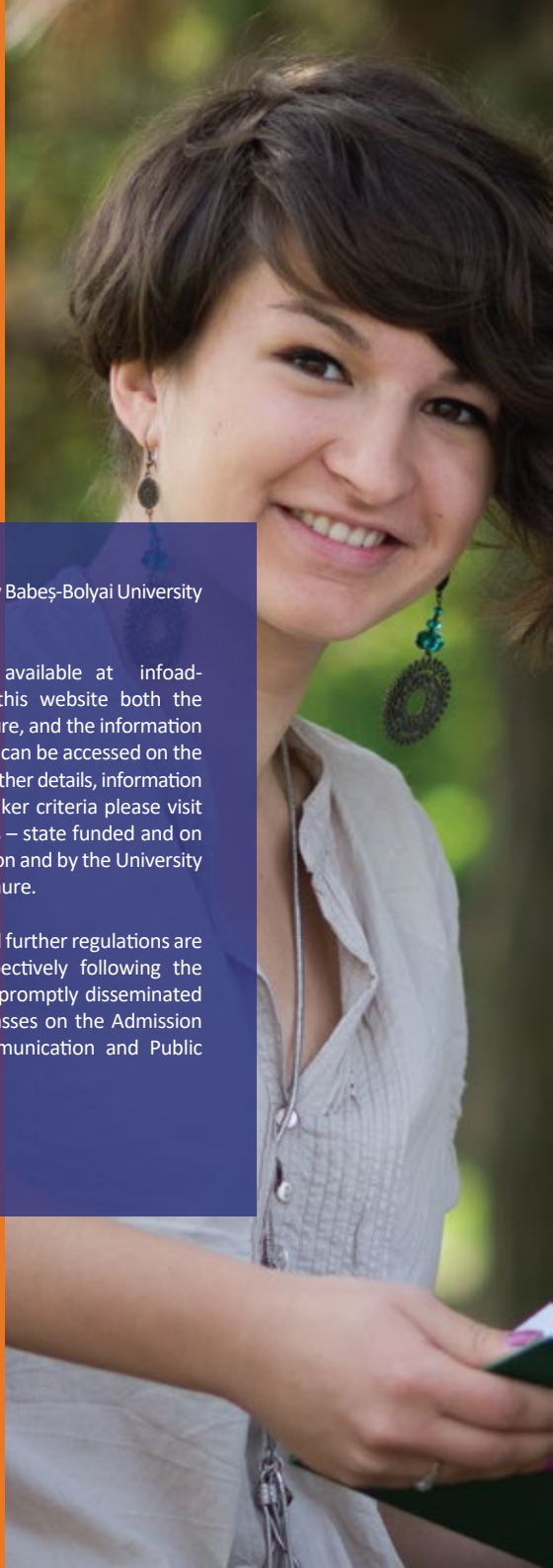




Table of contents

- 4 MATHEMATICS AND COMPUTER SCIENCE
- 5 PHYSICS
- 6 CHEMISTRY AND CHEMICAL ENGINEERING
- 8 BIOLOGY AND GEOLOGY
- 10 GEOGRAPHY
- 11 ENVIRONMENTAL SCIENCE AND
ENGINEERING
- 12 LAW
- 13 LETTERS
- 16 HISTORY AND PHILOSOPHY
- 17 SOCIOLOGY AND SOCIAL WORK
- 18 PSYCHOLOGY AND EDUCATION SCIENCES
- 20 ECONOMICS AND BUSINESS
ADMINISTRATION
- 22 EUROPEAN STUDIES
- 23 BUSINESS
- 24 POLITICAL, ADMINISTRATIVE AND
COMMUNICATION SCIENCES
- 26 PHYSICAL EDUCATION AND SPORT
- 28 ORTHODOX THEOLOGY
- 29 GREEK CATHOLIC THEOLOGY
- 30 REFORMED THEOLOGY AND MUSIC
- 31 ROMAN CATHOLIC THEOLOGY
- 32 THEATRE AND FILM
- 35 ENGINEERING
- 36 MEDICAL AND HEALTH SCIENCES
- 38 PEDAGOGICAL MODULE (LEVEL I)

FACULTY OF MATHEMATICS AND COMPUTER SCIENCE

www.cs.ubbcluj.ro

1 M. Kogălniceanu Street,
Cluj-Napoca, 400084
0264-405.327
admitere.cs@ubbcluj.ro

ADMISSION CALENDAR

JULY

- 13-16 Submitting applications online (the platform closes on 16 July at 08:00 hrs)
- 16 Posting the list of candidates by rooms and location
- 17 Admission test (candidates may submit original documents when sitting the test)
- 18 Posting examination results
- 18-19 Submitting appeals online, reporting observations (errors, omissions, etc.)
- 20 Handling appeals and posting initial results (by specialisations)
- 20-22 Confirmation of places and submission of original documents, phase I
- 22 Redistribution of unused places after phase I
- 22-25 Confirmation of places following redistribution and submission of original documents, phase II
- 27 Posting final results

SEPTEMBER

- 7-8 Submitting applications online (the platform closes on 8 September at 12:00 hrs)
- 8 Posting the list of candidates by rooms and location
- 9 Admission test (candidates may submit original documents when sitting the test)
- 10 Posting examination results
- 10-11 Submitting appeals online, reporting observations (errors, omissions, etc.)
- 11 Handling appeals and posting initial results (by specialisations)
- 11-14 Confirmation of places and submission of original documents, phase I
- 14 Redistribution of unused places after phase I
- 14-15 Confirmation of places following redistribution and submission of original documents, phase II
- 16 Posting final results

Mathematics Field

- 1.1 Specialisation **MATHEMATICS** - 3 years, full time - *in Romanian and Hungarian*
- 1.2 Specialisation **MATHEMATICS COMPUTER SCIENCE** - 3 years, full time - *in English*

Interdisciplinary Field (Mathematics-Computer Science)

- 1.3 Specialisation **MATHEMATICS-COMPUTER SCIENCE (double major)** - 4 years, full time education - *in Romanian, Hungarian, and English**

Computer Science Field

- 1.4 Specialisation **COMPUTER SCIENCE** - 3 years, full time - *in Romanian, Hungarian, German, English*
- 1.5 Specialisation **ARTIFICIAL INTELLIGENCE** - 3 years, full time - *in English*

Computers and IT Field

- 1.6 Specialisation **INFORMATION ENGINEERING** - 4 years, full time education - *in English and Hungarian*

SELECTION CRITERIA FOR ALL SPECIALISATIONS

- The admission score is the written examination (multiple choice) grade in Mathematics or Informatics, according to the candidate's choice upon application, amounting to 100% of the final grade.
- The Faculty of Mathematics and Computer Science reserves specific benefits for the candidates who obtained outstanding results in specialised school competitions and Olympiads or the Mate-Info UBB Competition (2025 and 2026 editions). For more details visit the faculty website.

**Admission for this programme is subject to provisional accreditation by ARACIS and publication in a Government Decision.*

FACULTY OF PHYSICS

www.phys.ubbcluj.ro

1 M. Kogălniceanu Street,
Cluj-Napoca, 400084
0264-405.328
secretariat.phys@ubbcluj.ro

ADMISSION CALENDAR

JULY

- 14-19 Submitting applications online (the platform closes on 19 July at 14:00 hrs)
- 14-19 Reporting observations (errors, omissions, etc.) (by 19 July at 14:00 hrs)
- 20 Posting the list of applicants
- 21 Admission exam and posting examination results
- 21-22 Submitting appeals and posting initial results (by specialisations)
- 23-27 Confirmation of places and submission of original documents, phase I (business days)
- 28 Redistribution of unused places after phase I
- 29 Confirmation of places following redistribution, phase II
- 30 Posting final results

SEPTEMBER

- 7-9 Submitting applications online (the platform closes on 9 September at 12:00 hrs)
- 7-9 Reporting observations (errors, omissions, etc.) (by 9 September at 12:00 hrs)
- 9 Posting the list of applicants
- 10 Admission exam and posting examination results
- 10-11 Submitting appeals and posting initial results (by specialisations)
- 12-14 Confirmation of places and submission of original documents, phase I (business days)
- 14 Redistribution of unused places after phase I
- 14-15 Confirmation of places following redistribution, phase II
- 16 Posting final results

Physics Field

2.1 Specialisation **PHYSICS** - 3 years, full time - *in Romanian and Hungarian*

2.2 Specialisation **MEDICAL PHYSICS*** - 3 years, full time - *in Romanian*

**The degree programme is offered by the Faculty of Medical and Health Sciences, but is run by the Faculty of Physics.*

2.3 Specialisation **PHYSICS WITH COMPUTER SCIENCE** - 3 years, full time - *in Romanian and Hungarian*

Applied Engineering Sciences Field

2.4 Specialisation **ENGINEERING PHYSICS** - 4 years, full time - *in Romanian and Hungarian*

SELECTION CRITERIA FOR ALL SPECIALISATIONS

- High school graduates holding a baccalaureate diploma will sit a written examination and the admission score will be calculated according to the following algorithm:

$$\text{ADMISSION SCORE} = 0.5 \times \text{BACCALAUREATE SCORE}^* + 0.5 \times \text{WRITTEN TEST SCORE}$$

* For the BACCALAUREATE SCORE the candidate can opt for one of the following: BACCALAUREATE AVERAGE SCORE or the BACCALAUREATE EXAM GRADE in PHYSICS, INFORMATICS, MATHEMATICS.

- The Faculty of Physics acknowledges the Augustin Maier Physics Competition, school Olympiads and a series of competitions for the high school students as an alternative admission method (details in the Faculty of Physics Addendum to the Regulation for organizing and conducting undergraduate level admission examination).



FACULTY OF CHEMISTRY AND CHEMICAL ENGINEERING

www.chem.ubbcluj.ro

11 Arany János Street,
Cluj-Napoca, 400028
0264-591.998, 0264-593.833 int. 5653
admitere.chem@ubbcluj.ro

ADMISSION CALENDAR

JULY

- 13-20 Submitting applications online (the platform closes on 20 July at 16:00 hrs)
- 22 Admission exam and posting examination results
- 22-23 Submitting and handling appeals, reporting observations (errors, omissions, etc.) (by 23 July at 16:00 hrs)
- 23 Posting initial results (by specialisations)
- 24-27 Confirmation of places and submission of original documents, phase I (the platform closes on 27 July at 14:00 hrs)
- 27 Redistribution of unused places after phase I
- 28-29 Confirmation of places following redistribution and submission of original documents, phase II (the platform closes on 29 July at 14:00 hrs)
- 30 Posting final results

SEPTEMBER

- 7-9 Submitting applications online (the platform closes on 9 September at 12:00 hrs)
- 10 Admission exam and posting examination results
- 10-11 Submitting and handling appeals, reporting observations (errors, omissions, etc.) (by 11 September at 16:00 hrs)
- 11 Posting initial results (by specialisations)
- 12-14 Confirmation of places and submission of original documents, phase I (the platform closes on 14 September at 14:00 hrs)
- 14 Redistribution of unused places after phase I
- 15 Confirmation of places following redistribution and submission of original documents, phase II (the platform closes on 15 September at 14:00 hrs)
- 16 Posting final results

Chemistry Field

- 3.1 Specialisation **CHEMISTRY** - 3 years, full time - *in Romanian and Hungarian*
- 3.2 Specialisation **PHARMACEUTICAL CHEMISTRY** - 3 years, full time dual degree* - *in Romanian*

Chemical Engineering Field

- 3.3 Specialisation **CHEMISTRY AND ENGINEERING OF ORGANIC SUBSTANCES, PETROCHEMISTRY AND CARBOCHEMISTRY** - 4 years, full time - *in Romanian and Hungarian*
- 3.4 Specialisation **FOOD CHEMISTRY AND BIOCHEMICAL TECHNOLOGIES** - 4 years, full time - *in Romanian*
- 3.5 Specialisation **ENGINEERING AND INFORMATION TECHNOLOGY OF CHEMICAL AND BIOCHEMICAL PROCESSES** - 4 years, full time - *in Romanian*
- 3.6 Specialisation **BIOCHEMICAL ENGINEERING** - 4 years, full time - *in Romanian*

SELECTION CRITERIA FOR ALL SPECIALISATIONS

- Multiple choice test worth 20% of the admission score, upon choice between:
 - Inorganic Chemistry
 - Organic Chemistry
 - Mathematics - Algebra

- Baccalaureate exam score worth 80% of the admission score.

$$\text{ADMISSION SCORE} = 0.2 \times \text{ADMISSION TEST GRADE} + 0.8 \times \text{BACCALAUREATE SCORE}$$

- At the request of the candidate, the grade obtained in the Candin Liteanu competition may replace the admission score.
- The Faculty of Chemistry and Chemical Engineering offers certain facilities to candidates who obtained outstanding results in profile competitions or Olympiads. For more details visit the faculty website.

**Under Higher Education Law no. 199/2023, university degree programmes may be organised in consortia for dual education. In the dual degree higher education system, the learning, teaching, practical, research and assessment activities are equally distributed between the university and the economic operators, subject to an agreement signed between them. The higher education institution conducts learning, teaching and assessment activities, while the economic operators provide work-based learning activities and hands-on training of students. In order to provide dual degree programmes, Babeş-Bolyai University has established collaboration protocols with relevant economic partners in their field of activity, thus providing its graduates with a competitive advantage on the labour market.*

UNIVERSITATEA
BABES-BOLYAI

ADMITERE.UBBCLUJ.RO



FACULTY OF BIOLOGY AND GEOLOGY

bioge.ubbcluj.ro

44 Republicii Street,
Cluj-Napoca, 400015
0264-431.858
bioge@ubbcluj.ro

ADMISSION CALENDAR

JULY

- 13-18 Submitting applications online (the platform closes on 18 July at 12:00 hrs)
- 20 Posting the list of applicants, admission exams (where applicable) and posting examination results
- 21 Reporting observations (errors, omissions, etc.) and submitting appeals (by 21 July at 16:00 hrs)
- 22 Posting initial results (by specialisations)
- 23-25 Confirmation of places and submission of original documents, phase I (the platform closes on 25 July at 12:00 hrs)
- 25 Redistribution of unused places after phase I
- 27-28 Confirmation of places following redistribution and submission of original documents, phase II (the platform closes on 28 July at 14:00 hrs)
- 28 Redistribution of unused places after phase II
- 29 Confirmation of places following redistribution and submission of original documents, phase III (the platform closes on 29 July at 14:00 hrs)
- 30 Posting final results

SEPTEMBER

- 7-10 Submitting applications online (the platform closes on 10 September at 12:00 hrs)
- 11 Posting the list of applicants, admission exams (where applicable) and posting examination results
- 12 Reporting observations (errors, omissions, etc.) and submitting appeals (by 12 September at 16:00 hrs)
- 12 Posting initial results (by specialisations)
- 13-14 Confirmation of places and submission of original documents, phase I (the platform closes on 14 September at 14:00 hrs)
- 14 Redistribution of unused places after phase I
- 15 Confirmation of places following redistribution and submission of original documents, phase II (the platform closes on 15 September at 14:00 hrs)
- 16 Posting final results

Biology Field

4.1 Specialisation **BIOLOGY** - 3 years, full time - *in Romanian and Hungarian*

4.2 Specialisation **BIOCHEMISTRY** - 3 years, full time - *in Romanian*

4.3 Specialisation **ENVIRONMENTAL BIOLOGY** - 3 years, full time - *in Romanian*

SELECTION CRITERIA

For the Romanian line of study:

- Motivation letter graded on a Pass/Fail basis.
- Bacalaureate score worth 100% of the admission score.

OR

- The Emil Racoviță Competition result, according to the formula:
Admission score = $9,00 + (\text{the competition score})/100$

For the Hungarian line of study:

- Bacalaureate score worth 50% of the admission score.
- Multiple choice test worth 50% of the admission score.

OR

- The Apathy Istvan Competition result, according to the formula:
Admission score = $9,00 + (\text{the competition score})/100$

Environmental Science Field

4.4 Specialisation **ECOLOGY AND ENVIRONMENTAL PROTECTION** - 3 years, full time - *in Hungarian*

SELECTION CRITERIA

Baccalaureate score worth 50% of the admission score.

- Multiple choice test worth 50% of the admission score.

OR

- The Apathy Istvan Competition result, according to the formula:

Admission score = $9,00 + (\text{the competition score})/100$

Applied Engineering Sciences Field

4.5 Specialisation **INDUSTRIAL BIOTECHNOLOGIES** - 4 years, full time - *in Romanian*

SELECTION CRITERIA

- Motivation letter graded on a Pass/Fail basis.

- Baccalaureate score worth 100% of the admission score.

OR

- The Emil Racoviță Competition result, according to the formula:

Admission score = $9,00 + (\text{the competition score})/100$

Geology Field

4.6 Specialisation **GEOLOGY** - 3 years, full time - *in Romanian and Hungarian*

SELECTION CRITERIA

- Motivation letter graded on a Pass/Fail basis.

- Baccalaureate score worth 100% of the final admission score.

OR

- Grade in the Koch Antal Competition for the Hungarian line of study, determined by the following formula:

Admission score = $9.00 + \text{competition score}/100$

Engineering Geology Field

4.7 Specialisation **ENGINEERING GEOLOGY** - 4 years, full time - *in Romanian*

SELECTION CRITERIA

- Motivation letter graded on a Pass/Fail basis.

- Baccalaureate score worth 100% of the final admission score.



FACULTY OF GEOGRAPHY

geografie.ubbcluj.ro

5-7 Clinicilor Street,
Cluj-Napoca, 400006
0264-431.865, 0264-592.214
admit.geografie@ubbcluj.ro

ADMISSION CALENDAR

JULY

- 14-20 Submitting applications online (the platform closes on 20 July at 15:00 hrs)
- 21 Reporting observations (errors, omissions, etc.)
- 22 Posting initial results (by specialisations)
- 23-25 Confirmation of places and submission of original documents, phase I (the platform closes on 25 July at 14:00 hrs)
- 27 Redistribution of unused places after phase I
- 28 Confirmation of places following redistribution and submission of original documents, phase II (the platform closes on 28 July at 12:00 hrs)
- 29 Posting final results

SEPTEMBER

- 7-9 Submitting applications online (the platform closes on 9 September at 13:00 hrs)
- 10 Reporting observations (errors, omissions, etc.)
- 10 Posting initial results (by specialisations)
- 11-12 Confirmation of places and submission of original documents, phase I (the platform closes on 12 September at 14:00 hrs)
- 14 Redistribution of unused places after phase I
- 15 Confirmation of places following redistribution and submission of original documents, phase II (the platform closes on 15 September at 12:00 hrs)
- 16 Posting final results

Geography Field

- 5.1 Specialisation **GEOGRAPHY** - 3 years, full time - *in Romanian and Hungarian*
- 5.2 Specialisation **GEOGRAPHY OF TOURISM** - 3 years, full time - *in Romanian, Hungarian, German* - 3 years, distance education - *in Romanian*
- 5.3 Specialisation **GEOGRAPHY OF TOURISM** in Gheorgheni - 3 years, full time - *in Romanian and Hungarian*
- 5.4 Specialisation **GEOGRAPHY OF TOURISM** in Sighetu Marmăției - 3 years, full time - *in Romanian*
- 5.5 Specialisation **GEOGRAPHY OF TOURISM** in Bistrița - 3 years, full time - *in Romanian*
- 5.6 Specialisation **GEOGRAPHY OF TOURISM** in Zalău - 3 years, full time - *in Romanian*
- 5.7 Specialisation **REGIONAL PLANNING** - 3 years, full time - *in Romanian and Hungarian*
- 5.8 Specialisation **CARTOGRAPHY** - 3 years, full time - *in Romanian*
- 5.9 Specialisation **HYDROLOGY AND METEOROLOGY** - 3 years, full time - *in Romanian*

SELECTION CRITERIA FOR ALL SPECIALISATIONS

- Motivation letter graded on a Pass/Fail basis.
- Baccalaureate score worth 100% of the admission score.
- Candidates who won prizes in various competitions receive an admission score of 10.00:
 - First, second, or third place in the national or international Geography Olympiad;
 - First place in the county Geography Olympiad;
 - First, second, or third place at the national level, first place at the county level in the Bolyai Farkas competition (Geography);
 - First, second, third place or honourable mention in the GEOMONDIS competition (Cluj-Napoca regional stage).



FACULTY OF ENVIRONMENTAL SCIENCE AND ENGINEERING

enviro.ubbcluj.ro

30 Fântânele Street,
Cluj-Napoca
0264-307.030
enviro@ubbcluj.ro

ADMISSION CALENDAR

JULY

- 13-20 Submitting applications online (the platform closes on 20 July at 13:00 hrs)
- 20 Posting examination results
- 21 Submitting appeals, reporting observations (errors, omissions, etc.)
- 22 Handling appeals and posting initial results (by specialisations)
- 22-27 Confirmation of places, phase I (the platform closes on 27 July at 14:00 hrs)
- 27 Redistribution of unused places after phase I
- 27-29 Confirmation of places after redistribution, phase II (the platform closes on 29 July at 16:00 hrs)
- 22-30 Submission of original documents (by 30 July at 10:00 hrs)
- 30 Posting final results

SEPTEMBER

- 7-10 Submitting applications online (the platform closes on 10 September at 13:00 hrs)
- 10 Posting examination results
- 11 Submitting appeals, reporting observations (errors, omissions, etc.)
- 12 Handling appeals and posting initial results (by specialisations)
- 12-14 Confirmation of places, phase I (the platform closes on 14 September at 14:00 hrs)
- 14 Redistribution of unused places after phase I
- 14-15 Confirmation of places after redistribution, phase II (the platform closes on 15 September at 15:00 hrs)
- 14-16 Submission of original documents (by 16 September at 12:00 hrs)
- 16 Posting final results

Environmental Science Field

- 6.1 Specialisation **ENVIRONMENTAL SCIENCE** - 3 years, full time - *in Romanian and Hungarian*
- 6.2 Specialisation **ENVIRONMENTAL SCIENCE** in Sfântu Gheorghe - 3 years, full time and full time dual degree* - *in Hungarian*
- 6.3 Specialisation **ENVIRONMENTAL MANAGEMENT AND AUDIT** - 3 years, full time - *in Romanian*

Environmental Engineering Field

- 6.4 Specialisation **ENVIRONMENTAL ENGINEERING** - 4 years, full time - *in Romanian and English***

**Admission for this programme is subject to provisional accreditation by ARACIS and publication in a Government Decision.

SELECTION CRITERIA FOR ALL SPECIALISATIONS

- Motivation letter graded on a Pass/Fail basis.
- Baccalaureate score worth 100% of the admission score.
- Candidates who scored at least 80 points in the Enviro-Pass competition receive an admission score of 10.00.
- Candidates who have scored less than 80 points in the Enviro-Pass competition may choose to have their score calculated according to the formula:
ADMISSION SCORE = 0.1 x COMPETITION GRADE + BACCALAUREATE SCORE
- Candidates who have a baccalaureate GPA of 9.21 or higher and scored 79 points in the Enviro-Pass competition receive an admission score of 10.00.
- For applicants who have received awards or special prizes at recognised international and national Olympiads/competitions endorsed by the Ministry, the admission score is 10.00, based on the supporting documentation.
- Candidates who participated during high school in competitions organised by other faculties or universities may choose to have their score calculated according to the formula:

$$\text{ADMISSION SCORE} = 0.5 \times \text{COMPETITION SCORE} + 0.5 \times \text{BACCALAUREATE SCORE}$$

*Under Higher Education Law no. 199/2023, university degree programmes may be organised in consortia for dual education. In the dual degree higher education system, the learning, teaching, practical, research and assessment activities are equally distributed between the university and the economic operators, subject to an agreement signed between them. The higher education institution conducts learning, teaching and assessment activities, while the economic operators provide work-based learning activities and hands-on training of students. In order to provide dual degree programmes, Babeş-Bolyai University has established collaboration protocols with relevant economic partners in their field of activity, thus providing its graduates with a competitive advantage on the labour market.

FACULTY OF LAW

law.ubbcluj.ro

10-12 General Traian Moşoiu Street,
Cluj-Napoca 400132
0264-402.782
admitere@law.ubbcluj.ro

ADMISSION CALENDAR

JULY

- 13-17 Submitting applications online (the platform closes on 17 July at 12:00 hrs)
- 18 Reporting observations (errors, omissions, etc.) (by 18 July at 14:00 hrs)
- 20 Admission examination
- 21 Submitting appeals against the grading criteria
- 22 Handling appeals
- 22 Posting examination results
- 23 Submitting appeals against the final grade
- 24 Handling appeals and posting initial results (by specialisations)
- 25-26 Confirmation of places and submission of original documents, phase I (the platform closes on 26 July at 15:00 hrs)
- 27 Redistribution of unused places after phase I
- 28 Confirmation of places following redistribution and submission of original documents, phase II (the platform closes on 28 July at 15:00 hrs)
- 29 Posting final results

SEPTEMBER

- 7-8 Submitting applications online (the platform closes on 8 September at 12:00 hrs)
- 9 Reporting observations (errors, omissions, etc.) (by 9 September at 14:00 hrs)
- 10 Admission examination
- 11 Submitting appeals against the grading criteria
- 11 Handling appeals
- 12 Posting examination results
- 13 Submitting appeals against the final grade
- 14 Handling appeals and posting initial results (by specialisations)
- 14-16 Confirmation of places and redistribution of unused places, submission of original documents (the platform closes on 16 September at 12:00 hrs)
- 16 Posting final results

The faculty organises admission for this session only if places are not filled in the July session.

Law Field

- 7.1 Specialisation **LAW** - 4 years, full time - *in Romanian*
- 4 years, distance education - *in Romanian*

SELECTION CRITERIA

- Examination assessing the logical reasoning skills, worth 50% of the admission score.
- Baccalaureate score worth 50% of the admission score.



FACULTY OF LETTERS

lett.ubbcluj.ro

31 Horea Street,
Cluj-Napoca, 400202
0264-532.238
Litereadmiterelinariomana@lett.ubbcluj.ro
Litereadmitereliniamaghiaara@lett.ubbcluj.ro

ADMISSION CALENDAR

JULY

- 13-17 Submitting applications online (the platform closes on 17 July at 14:00 hrs)
- 18 Posting examination results
- 19 Submitting appeals (by 19 July at 12:00 hrs) and handling appeals
- 20 Filing observations (errors, omissions, etc.)
- 21 Posting initial results (by specialisations)
- 21-23 Confirmation of places and submission of original documents, phase I
- 25 Redistribution of unused places after phase I
- 25-26 Confirmation of places, submission of original documents, phase II
- 29 Posting final results

SEPTEMBER

- 7-9 Submitting applications online (the platform closes on 9 September at 14:00 hrs)
- 10 Posting examination results
- 11 Submitting appeals (by 11 September at 12:00 hrs) and handling appeals
- 12 Filing observations (errors, omissions, etc.)
- 13 Posting initial results (by specialisations)
- 14-15 Confirmation of places and submission of original documents, phase I
- 15 Redistribution of unused places after phase I
- 15 Confirmation of places, submission of original documents, phase II
- 16 Posting final results

Language and Literature Field

8.1 Specialisation **ROMANIAN LANGUAGE AND LITERATURE** - Hungarian Language and Literature or a Modern Language and Literature or Latin Language or Ancient Greek Language or World and Comparative Literature - 3 years, full time

8.2 Specialisation **ROMANIAN LANGUAGE AND LITERATURE** - Hungarian Language and Literature or German Language and Literature (Romanian language as foreign language) - 3 years, full time

8.3 Specialisation **WORLD AND COMPARATIVE LITERATURE** - Modern Language and Literature or Romanian Language and Literature or Hungarian Language or Latin Language or Ancient Greek Language or Hebrew Language - 3 years, full time

8.4 Specialisation **HUNGARIAN LANGUAGE AND LITERATURE (single specialisation)** - 3 years, full time

8.5 Specialisation **HUNGARIAN LANGUAGE AND LITERATURE** - Romanian Language and Literature or a Modern Language and Literature or Latin Language or Ancient Greek Language or World and Comparative Literature - 3 years, full time

8.6 Specialisation **ENGLISH LANGUAGE AND LITERATURE** - Romanian Language and Literature or Hungarian Language and Literature or a Modern Language and Literature or Latin Language or Ancient Greek Language or Hebrew Language or World and Comparative Literature - 3 years, full time

8.7 Specialisation **FRENCH LANGUAGE AND LITERATURE** - Romanian Language and Literature or Hungarian Language and Literature or a Modern Language and Literature or Latin Language or Ancient Greek Language or Hebrew Language or World and Comparative Literature - 3 years, full time

8.8 Specialisation **GERMAN LANGUAGE AND LITERATURE** - Romanian Language and Literature or Hungarian Language and Literature or a Modern Language and Literature or Latin Language or Ancient Greek Language or Hebrew Language or World and Comparative Literature - 3 years, full time

8.9 Specialisation **RUSSIAN LANGUAGE AND LITERATURE** - Romanian Language and Literature or Hungarian Language and Literature or a Modern Language and Literature or Latin Language or Ancient Greek Language or Hebrew Language or World and Comparative Literature - 3 years, full time

8.10 Specialisation **ITALIAN LANGUAGE AND LITERATURE** - Romanian Language and Literature or Hungarian Language and Literature or a Modern Language and Literature or Latin Language or Ancient Greek Language or Hebrew Language or World and Comparative Literature - 3 years, full time

8.11 Specialisation **SPANISH LANGUAGE AND LITERATURE** - Romanian Language and Literature or Hungarian Language and Literature or a Modern Language and Literature or Latin Language or Ancient Greek Language or Hebrew Language or World and Comparative Literature - 3 years, full time

8.12 Specialisation **UKRAINIAN LANGUAGE AND LITERATURE** - Romanian Language and Literature or Hungarian Language and Literature or a Modern Language and Literature or Latin Language or Ancient Greek Language or Hebrew Language or World and Comparative Literature - 3 years, full time

8.13 Specialisation **NORWEGIAN LANGUAGE AND LITERATURE** - Romanian Language and Literature or Hungarian Language and Literature or a Modern Language and Literature or Latin Language or Ancient Greek Language or Hebrew Language or World and Comparative Literature - 3 years, full time

8.14 Specialisation **JAPANESE LANGUAGE AND LITERATURE** - Romanian Language and Literature or Hungarian Language and Literature or a Modern Language and Literature or Latin Language or Ancient Greek Language or Hebrew Language or World and Comparative Literature - 3 years, full time

8.15 Specialisation **CHINESE LANGUAGE AND LITERATURE** - Romanian Language and Literature or Hungarian Language and Literature or a Modern Language and Literature or Latin Language or Ancient Greek Language or Hebrew Language or World and Comparative Literature - 3 years, full time

8.16 Specialisation **KOREAN LANGUAGE AND LITERATURE** - Romanian Language and Literature or Hungarian Language and Literature or a Modern Language and Literature or Latin Language or Ancient Greek Language or Hebrew Language or World and Comparative Literature - 3 years, full time

8.17 Specialisation **FINNISH LANGUAGE AND LITERATURE** - Romanian Language and Literature or Hungarian Language and Literature or a Modern Language and Literature or Latin Language or Ancient Greek Language or Hebrew Language or World and Comparative Literature - 3 years, full time

8.18 Specialisation **PORTUGUESE LANGUAGE AND LITERATURE** - Romanian Language and Literature or Hungarian Language and Literature or a Modern Language and Literature or Latin Language or Ancient Greek Language or Hebrew Language or World and Comparative Literature - 3 years, full time

8.19 Specialisation **CLASSICAL PHILOLOGY (Latin Language and Literature - Ancient Greek Language and Literature)** - 3 years, full time

Cultural Studies Field

8.20 Specialisation **ETHNOLOGY** - 3 years, full time - *in Hungarian*

8.21 Specialisation **CULTURAL STUDIES** - 3 years, full time - *in Hungarian*

Interdisciplinary Field (Language and Literature - Cultural Studies)

8.22 Specialisation **HUNGARIAN LANGUAGE AND LITERATURE - ETHNOLOGY (double major)** - 4 years, full time - *in Hungarian*

Applied Modern Languages Field

8.23 Specialisation **APPLIED MODERN LANGUAGES (English-French or English-German or English-Italian or English-Spanish or French-English or French-German or French-Italian or French-Spanish)** - 3 years, full time

SELECTION CRITERIA

- Proficiency test (cover letter) graded on a Pass/Fail basis.
- Baccalaureate score worth 50% of the admission score.
- High school overall grade average worth 50% of the admission score.

*for candidates with a bachelor's degree, the baccalaureate score will be replaced by the graduation exam score, and the average score of the high school years of study will be replaced by the average score of the undergraduate years of study.

NOTE:

- As a Minor (B) specialisation **World and Comparative Literature** can be studied in both Romanian and Hungarian language.
- Modern languages and literatures for **Minor (B) specialisations**: English, French, German, Russian, Italian, Spanish, Norwegian, Finnish, Japanese, Hebrew.
- Specialisations available **advanced level** only: English and German.
- Specialisations available **beginner level** only: Japanese, Chinese, Korean, Norwegian, Finnish, Portuguese, Hebrew, Ancient Greek.
- Specialisations available both **beginner** and **advanced level**: French, Russian, Italian, Spanish, Ukrainian, Latin.
- For the **Japanese Language and Literature specialisation (A or B)**, Japanese **cannot** come into combination with other Asian languages (Chinese Language and Literature or Korean Language and Literature).
- For candidates from the **Applied Modern languages** department, the level of language skills must be advanced.



FACULTY OF HISTORY AND PHILOSOPHY

hiphi.ubbcluj.ro

1 Mihail Kogălniceanu Street,
Cluj-Napoca, 400084
0264-405.300, int. 5275
0756-017.552
hiphi@ubbcluj.ro

ADMISSION CALENDAR

JULY

- 13-19 Submitting applications online (the platform closes on 19 July at 12:00 hrs)
- 19 Reporting observations (errors, omissions, etc.) (by 24:00 hrs)
- 20 Posting initial results (by specialisations)
- 20-24 Confirmation of places and submission of original documents, phase I (the platform closes on 24 July at 12:00 hrs)
- 25 Redistribution of unused places after phase I
- 25-28 Confirmation of places following redistribution and submission of original documents, phase II (the platform closes on 28 July at 12:00 hrs)
- 30 Posting final results

SEPTEMBER

- 7-10 Submitting applications online (the platform closes on 10 September at 12:00 hrs)
- 10 Reporting observations (errors, omissions, etc.) (by 24:00 hrs)
- 11 Posting initial results (by specialisations)
- 11-13 Confirmation of places and submission of original documents, phase I (the platform closes on 13 September at 24:00 hrs)
- 14 Redistribution of unused places after phase I
- 14-15 Confirmation of places following redistribution and submission of original documents, phase II (the platform closes on 15 September at 12:00 hrs)
- 16 Posting final results

History Field

- 9.1 Specialisation **HISTORY** - 3 years, full time - *in Romanian and Hungarian*
- 3 years, distance education - *in Romanian and Hungarian*
- 9.2 Specialisation **ART HISTORY** - 3 years, full time - *in Romanian and Hungarian*
- 9.3 Specialisation **ARCHIVE STUDIES** - 3 years, full time - *in Romanian and Hungarian*
- 9.4 Specialisation **ARCHAEOLOGY** - 3 years, full time - *in Romanian and Hungarian*

International Relations and European Studies Field

- 9.5 Specialisation **INTERNATIONAL RELATIONS AND EUROPEAN STUDIES** - 3 years, full time - *in Romanian and Hungarian*

Cultural Studies Field

- 9.6 Specialisation **ETHNOLOGY** - 3 years, full time - *in Romanian*
- 9.7 Specialisation **CULTURAL TOURISM** - 3 years, full time - *in Romanian and Hungarian*

Security Studies Field

- 9.8 Specialisation **SECURITY STUDIES** - 3 years, full time - *in Romanian and English*
- 3 years, distance education - *in Romanian*

Philosophy Field

- 9.9 Specialisation **PHILOSOPHY** - 3 years, full time - *in Romanian and Hungarian*
- 3 years, distance education - *in Romanian*

SELECTION CRITERIA FOR ALL SPECIALISATIONS

- Motivation letter graded on a Pass/Fail basis. It will be written in the language of instruction of the degree programme.
- Applicants will be ranked according to the baccalaureate score worth 100% of the admission score.
- Candidates who have won prizes in school Olympiads and specialised competitions are eligible for special conditions. For more details visit the faculty website.

FACULTY OF SOCIOLOGY AND SOCIAL WORK

socasis.ubbcluj.ro

128-130 '21 Decembrie 1989' Bvd.,
Cluj-Napoca, 400604
0756-831.955, 0264-424.674, 0264-419.958
admitere.socasis@ubbcluj.ro

ADMISSION CALENDAR

JULY

- 13-19 Submitting applications online (the platform closes on 19 July at 24:00 hrs)
- 20 Reporting observations (errors, omissions, etc.)
- 21 Posting initial results (by specialisations)
- 21-24 Confirmation of places, phase I (the platform closes on 24 July at 24:00 hrs)
- 26 Redistribution of unused places after phase I
- 26-28 Confirmation of places after redistribution, phase II (the platform closes on 28 July at 24:00 hrs)
- 30 Posting final results
- 17-28 Submission of original documents
- August

SEPTEMBER

- 7-10 Submitting applications online (the platform closes on 10 September at 24:00 hrs)
- 11 Reporting observations (errors, omissions, etc.)
- 12 Posting initial results (by specialisations)
- 12-13 Confirmation of places, phase I (the platform closes on 13 September at 24:00 hrs)
- 14 Redistribution of unused places after phase I
- 14 Confirmation of places after redistribution, phase II (the platform closes on 14 September at 24:00 hrs)
- 16 Posting final results
- 17-25 Submission of original documents

Sociology Field

- 10.1 Specialisation **SOIOLOGY** - 3 years, full time - *in Romanian and Hungarian*
- 10.2 Specialisation **HUMAN RESOURCES** - 3 years, full time - *in Romanian and Hungarian*
- 10.3 Specialisation **ANTHROPOLOGY** - 3 years, full time - *in Romanian and Hungarian*

Social Work Field

- 10.4 Specialisation **SOCIAL WORK** - 3 years, full time - *in Romanian and Hungarian* - 3 years, distance education - *in Romanian and Hungarian*
- 10.5 Specialisation **SOCIAL WORK** in Reșița - 3 years, full time - *in Romanian*

SELECTION CRITERIA FOR ALL SPECIALISATIONS

- Motivation letter graded on a Pass/Fail basis
- Baccalaureate score worth 100% of the admission score, respectively 100% graduation exam score for bachelor's degree graduates applying for places on tuition.
- Candidates who participated and obtained prizes in profile school Olympiads benefit from certain facilitations. For more details visit the faculty website.



FACULTY OF PSYCHOLOGY AND EDUCATION SCIENCES

psiedu.ubbcluj.ro

7 Sindicatelor Street,
Cluj Napoca, 400029
RO 0264-405.337
HU 0264-445.206
admitere.psiedu@ubbcluj.ro

ADMISSION CALENDAR

JULY

- 14-18 Submitting applications online (the platform closes on 18 July at 12:00 hrs)
- 19 Posting lists of applicants and assignments to auditoriums
- 20-21 Admission tests (in person)
- 21 Posting examination results
- 22 Submitting written test appeals, reporting observations (errors, omissions, etc.) (by 22 July at 15:00 hrs)
- 23 Posting initial results (by specialisations)
- 24-25 Confirmation of places and submission of original documents, phase I (by 25 July at 15:00 hrs)
- 26 Redistribution of unused places after phase I
- 27-28 Confirmation of places following redistribution and submission of original documents, phase II (by 28 July at 14:00 hrs)
- 29 Redistribution of unused places after phase II
- 29 Confirmation of places following redistribution and submission of original documents, phase III (by 29 July at 14:00 hrs)
- 30 Posting final results

SEPTEMBER

- 7-8 Submitting applications online (the platform closes on 8 September at 12:00 hrs)
- 9 Posting lists of applicants and assignments to auditoriums
- 10 Admission tests (in person)
- 10 Posting examination results
- 11 Submitting written test appeals, reporting observations (errors, omissions, etc.) (by 11 September at 12:00 hrs)
- 14 Posting initial results (by specialisations)
- 14-15 Confirmation of places and submission of original documents, phase I (by 15 September at 14:00 hrs)
- 15 Redistribution of unused places after phase I
- 16 Confirmation of places following redistribution and submission of original documents, phase II (by 16 September at 12:00 hrs)
- 16 Posting final results

Psychology Field

- 11.1 Specialisation **PSYCHOLOGY** - 3 years, full time - *in Romanian and Hungarian*
- 3 years, distance education - *in Romanian and Hungarian*

SELECTION CRITERIA

For the Romanian line of study:

- Baccalaureate score worth 50% of the admission score.
- Written test grade assessing general cognitive skills, worth 50% of the admission score.
- Applicants in the July 2026 session who sit the Nicolae Mărgineanu competition in March 2026 may choose to replace their written test grade with the competition grade.

For the Hungarian line of study:

- Baccalaureate score worth 20% of the admission score.
- Oral test grade, worth 80% of the admission score.

- 11.2 Specialisation **PSYCHOLOGY - COGNITIVE SCIENCES** - 3 years, full time - *in English*

SELECTION CRITERIA

- Baccalaureate score worth 50% of the admission score.
- Written test grade assessing general cognitive skills, worth 50% of the admission score. The examination is conducted in English.

Education Sciences Field

- 11.3 Specialisation **SPECIAL EDUCATION** - 3 years, full time - *in Romanian and Hungarian*
- 3 years, distance education - *in Romanian*

SELECTION CRITERIA

For the Romanian line of study:

- Baccalaureate score worth 50% of the admission score.
- The grade for the argumentative essay, submitted after application following a procedure communicated by the faculty, worth 50% of the admission score.

For the Hungarian line of study:

- Baccalaureate score worth 20% of the admission score.
- Oral test grade, worth 80% of the admission score.

11.4 Specialisation **PEDAGOGY** - 3 years, full time - *in Romanian*

SELECTION CRITERIA

- Motivation essay, with date and signature, submitted upon application, graded on a Pass/Fail basis.
- Baccalaureate score worth 100% of the admission score.

11.5 Specialisation **PEDAGOGY OF PRIMARY EDUCATION*** - 3 years, full time - *in Romanian, Hungarian, German* - 3 years, distance education - *in Romanian*

11.6 Specialisation **PEDAGOGY OF PRIMARY EDUCATION*** in Satu Mare - 3 years, full time - *in Hungarian*

11.7 Specialisation **PEDAGOGY OF PRIMARY EDUCATION*** in Târgu Mureş - 3 years, full time - *in Romanian and Hungarian* - 3 years, full time - *in Romanian*

11.8 Specialisation **PEDAGOGY OF PRIMARY EDUCATION*** in Reşiţa - 3 years, full time - *in Romanian*

11.9 Specialisation **PEDAGOGY OF PRIMARY EDUCATION*** in Odorheiu Secuiesc - 3 years, distance education - *in Hungarian*

11.10 Specialisation **PEDAGOGY OF PRIMARY EDUCATION*** in Năsăud - 3 years, full time - *in Romanian* - 3 years, distance education - *in Romanian*

11.11 Specialisation **PEDAGOGY OF PRIMARY EDUCATION*** in Sighetu Marmaţiei - 3 years, full time - *in Romanian* - 3 years, distance education - *in Romanian*

11.12 Specialisation **EARLY CHILDHOOD EDUCATION AND CARE*** - 3 years, full time - *in Romanian* - 3 years, distance education - *in Romanian, Hungarian, and German*

11.13 Specialisation **EARLY CHILDHOOD EDUCATION AND CARE*** in Năsăud- 3 years, full time - *in Romanian*

11.14 Specialisation **EARLY CHILDHOOD EDUCATION AND CARE*** in Odorheiu Secuiesc - 3 years, full time - *in Hungarian*

11.5 Specialisation **EARLY CHILDHOOD EDUCATION AND CARE*** in Sighetu Marmaţiei- 3 years, distance education - *in Romanian*

11.16 Specialisation **EARLY CHILDHOOD EDUCATION AND CARE*** in Reşiţa - 3 years, distance education - *in Romanian*

11.17 Specialisation **EARLY CHILDHOOD EDUCATION AND CARE*** in Târgu Mureş - 3 years, distance education - *in Romanian*

SELECTION CRITERIA

- Oral test (communication skills and competence) graded on a Pass/Fail basis.
- Baccalaureate score worth 100% of the admission score.

*Admission for these programmes is subject to provisional accreditation by ARACIS and publication in a Government Decision.



FACULTY OF ECONOMICS AND BUSINESS ADMINISTRATION

econ.ubbcluj.ro

58-60 Teodor Mihali Street,
Cluj-Napoca, 400591
0264-418.655, int. 5866
admitere@econ.ubbcluj.ro

ADMISSION CALENDAR

JULY

- 13-17 Submitting applications online (the platform closes on 17 July at 23:59 hrs)
- 20 Posting the list of applicants and examination results
- 20-21 Reporting observations (errors, omissions, etc.), submitting and handling appeals (24 hours after the test results are posted)
- 21 Posting initial results (by specialisations)
- 22-26 Confirmation of places, phase I (the platform closes on 26 July at 23:59 hrs)
- 27 Redistribution of unused places after phase I
- 27-28 Confirmation of places after redistribution, phase II (the platform closes on 28 July at 23:59 hrs)
- 30 Posting final results
- 31.08 Submission of original documents
- 4.09

SEPTEMBER

- 7-9 Submitting applications online (the platform closes on 9 September at 14:00 hrs)
- 10 Posting the list of applicants and examination results
- 10-11 Reporting observations (errors, omissions, etc.), submitting and handling appeals (24 hours after the test results are posted)
- 11 Posting initial results (by specialisations)
- 11-13 Confirmation of places (the platform closes on 13 September at 14:00 hrs)
- 16 Posting final results
- 17-22 Submission of original documents

Business Administration Field

- 12.1 Specialisation **ECONOMICS OF TRADE, TOURISM AND SERVICES** - 3 years, full time - *in Romanian* - 3 years, distance education - *in Romanian*
- 12.2 Specialisation **ECONOMICS OF TRADE, TOURISM AND SERVICES** in Sfântu Gheorghe - 3 years, full time and full time dual degree* - *in Romanian and Hungarian*
- 12.3 Specialisation **ECONOMICS OF TRADE, TOURISM AND SERVICES** in Reșița - 3 years, full time and full time dual degree* - *in Romanian*
- 12.4 Specialisation **ECONOMICS OF THE FIRM** in Sfântu Gheorghe - 3 years, full time - *in Hungarian* - 3 years, distance education - *in Hungarian*
- 12.5 Specialisation **BUSINESS ADMINISTRATION**- 3 years, full time and distance education - *in German*

Cybernetics, Statistics and Business Information Systems Field

- 12.6 Specialisation **BUSINESS INFORMATION SYSTEMS** - 3 years, full time - *in Romanian and Hungarian* - 3 years, distance education - *in Romanian*
- 12.7 Specialisation **BUSINESS INFORMATION SYSTEMS** in Arad - 3 years, distance education - *in Romanian*
- 12.8 Specialisation **ECONOMIC STATISTICS AND DATA SCIENCE** - 3 years, full time - *in Romanian*

Accounting Field

- 12.9 Specialisation **ACCOUNTING AND MANAGEMENT INFORMATION SYSTEMS** - 3 years, full time - *in Romanian and English* - 3 years, distance education - *in Romanian*
- 12.10 Specialisation **ACCOUNTING AND MANAGEMENT INFORMATION SYSTEMS** in Sighetu Marmației - 3 years, full time - *in Romanian* - 3 years, distance education - *in Romanian*
- 12.11 Specialisation **ACCOUNTING AND MANAGEMENT INFORMATION SYSTEMS** in Reșița - 3 years, full time - *in Romanian*

Economics Field

- 12.12 Specialisation **GENERAL ECONOMICS** - 3 years, full time - *in Romanian*
- 12.13 Specialisation **AGRI-FOOD AND ENVIRONMENTAL ECONOMICS** - 3 years, full time - *in Romanian*

Economics and International Affairs Field

- 12.14 Specialisation **ECONOMICS AND INTERNATIONAL AFFAIRS** - 3 years, full time - *in Romanian and English* - 3 years, distance education - *in Romanian*

Finance Field

12.15 Specialisation **FINANCE AND BANKING** - 3 years, full time - *in Romanian, Hungarian, English* - 3 years, distance education - *in Romanian*

Management Field

12.15 Specialisation **MANAGEMENT** - 3 years, full time - *in Romanian, Hungarian, English* - 3 years, distance education - *in Romanian and Hungarian*

Marketing Field

12.17 Specialisation **MARKETING** - 3 years, full time - *in Romanian and Hungarian* - 3 years, distance education - *in Romanian*

12.18 Specialisation **MARKETING** in Reșița - 3 years, full time - *in Romanian* - 3 years, distance education - *in Romanian*

SELECTION CRITERIA FOR ALL SPECIALISATIONS

1st criteria: Presentation and graphical representation of economic content, marked Pass/Fail. The document must be handwritten, dated and signed by the candidate and submitted with the application. It must be written in the teaching language of the study degree programme(s) the candidate is applying for. Where a candidate is applying for study programmes with teaching in several languages (selecting several options), they will submit one text in each of the teaching languages of the selected degree programmes.

2nd criteria: ranking candidates admitted following the 1st criteria according to the admission score. The admission score is the baccalaureate score to which, where applicable, additional score is calculated according to the supplementary/specific criteria; the grade can be maximum 10.00.

**Under Higher Education Law no. 199/2023, university degree programmes may be organised in consortia for dual education. In the dual system of higher education, the learning, teaching, practical, research and assessment activities are equally distributed between the university and the economic operators, subject to an agreement signed between them. The higher education institution conducts learning, teaching and assessment activities, while the economic operators provide work-based learning activities and hands-on training of students. In order to provide dual degree programmes Babeş-Bolyai University has established collaboration protocols with relevant economic partners in their field of activity, thus providing its graduates with a competitive advantage on the labour market.*



FACULTY OF EUROPEAN STUDIES

euro.ubbcluj.ro

1 Emmanuel de Martonne Street,
Cluj-Napoca, 400090
0264-593.770
admitere.euro@ubbcluj.ro

ADMISSION CALENDAR

JULY

- 14-20 Submitting applications online (the platform closes on 20 July at 10:00 hrs)
- 20 Posting the list of applicants
- 20-21 Submitting appeals online and reporting observations (errors, omissions, etc.) (by 21 July at 12:00 hrs)
- 21 Handling appeals and posting initial results (by specialisations)
- 21-26 Confirmation of places, phase I (the platform closes on 26 July at 12:00 hrs)
- 26 Redistribution of unused places after phase I
- 26-29 Confirmation of places after redistribution, phase II (the platform closes on 29 July at 16:00 hrs)
- 30 Posting final results
- 21.07 Submission of original documents
- 18.08

SEPTEMBER

- 7-10 Submitting applications online (the platform closes on 10 September at 14:00 hrs)
- 10 Posting the list of applicants
- 10-11 Submitting appeals online and reporting observations (errors, omissions, etc.) (by 11 September at 12:00 hrs)
- 11 Handling appeals and posting initial results (by specialisations)
- 11-14 Confirmation of places, phase I (the platform closes on 14 September at 16:00 hrs)
- 14 Redistribution of unused places after phase I
- 14-15 Confirmation of places after redistribution, phase II (the platform closes on 15 September at 16:00 hrs)
- 16 Posting final results
- 11-22 Submission of original documents

International Relations and European Studies Field

13.1 Specialisation **INTERNATIONAL RELATIONS AND EUROPEAN STUDIES** - 3 years, full time - *in Romanian, German, English* - 3 years, distance education - *in Romanian*

13.2 Specialisation **BUSINESS DIPLOMACY** - 3 years, full time - *in Romanian*

Management Field

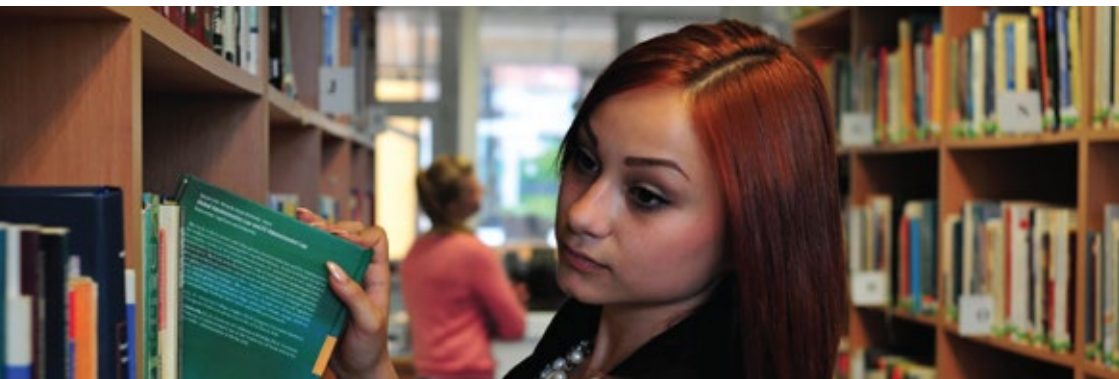
13.3 Specialisation **MANAGEMENT** - 3 years, full time - *in Romanian*

Administrative Sciences Field

13.4 Specialisation **EUROPEAN ADMINISTRATION** - 3 years, full time - *in Romanian*

SELECTION CRITERIA FOR ALL SPECIALISATIONS

- Motivation letter graded on a Pass/Fail basis. The motivation letter will be submitted online with the application. Results are published on the admission platform.
- For the German and English lines of study the motivation letter will be written and presented in German/English during an online interview.
- Arithmetic mean with two decimals of any two written tests at the baccalaureate exam, upon candidate's choice, worth 100% of the final score. The two grades for the selected subjects must be indicated on the first page of the motivation letter.
- Applicants for the Management specialisation may opt to have their admission score substituted by the score they obtained in the Euro-manager competition.



FACULTY OF BUSINESS

tbs.ubbcluj.ro

7 Horea Street,
Cluj Napoca, 400174
0264-599.170
admitere.tbs@ubbcluj.ro

ADMISSION CALENDAR

JULY

- 13-20 Submitting applications online (the platform closes on 20 July at 23:59 hrs)
- 22 Posting examination results
- 22 Submitting appeals online and reporting observations (errors, omissions, etc.) (by 16:00 hrs)
- 23 Handling appeals and posting initial results (by specialisations)
- 24-25 Confirmation of places, phase I
- 26 Redistribution of unused places after phase I and submission of original documents
- 27-28 Confirmation of places following redistribution, phase II
- 29 Posting final results

SEPTEMBER

- 7-10 Submitting applications online (the platform closes on 10 September at 23:59 hrs)
- 11 Posting examination results
- 11 Submitting appeals online and reporting observations (errors, omissions, etc.) (until 16:00 hrs)
- 12 Handling appeals and posting initial results (by specialisations)
- 13-14 Confirmation of places, phase I
- 15 Redistribution of unused places after phase I and submission of original documents
- 16 Confirmation of places following redistribution, phase II
- 16 Posting final results

Business Administration Field

14.1 Specialisation **BUSINESS ADMINISTRATION** - 3 years, full time - *in Romanian and English* - 3 years, distance education - *in Romanian*

14.2 Specialisation **BUSINESS ADMINISTRATION** in Bistrița - 3 years, full time - *in Romanian*

14.3 Specialisation **BUSINESS ADMINISTRATION IN HOSPITALITY SERVICES** - 3 years, full time - *in Romanian and English* - 3 years, distance education - *in Romanian*

SELECTION CRITERIA FOR ALL SPECIALISATIONS

- Motivation essay written in the teaching language of the degree programme, graded on a Pass/Fail basis.

How to calculate the admission score:

1. 100% of the baccalaureate exam score if the candidate did not participate in the knowledge competition or does not wish this grade to be taken into consideration.
2. 100% of the baccalaureate exam score + 10% of the knowledge competition score if the competition score is at least 6.00. The final grade cannot be higher than 10.00.



FACULTY OF POLITICAL, ADMINISTRATIVE AND COMMUNICATION SCIENCES

fspac.ubbcluj.ro

71 Traian Moşoiu Street,
Cluj-Napoca, 400132
0264-431.505
admitere@fspac.ro

ADMISSION CALENDAR

JULY

- 13-18 Submitting applications online (the platform closes on 18 July at 24:00 hrs)
- 19 Posting examination results
- 19-20 Submitting examination appeals and reporting observations (errors, omissions, etc.) (24 hours after the test results are posted)
- 21 Posting initial results (by specialisations)
- 22-24 Confirmation of places and applying for redistribution of places (the platform closes on 24 July at 24:00 hrs)
- 26 Redistribution of unused places after phase I
- 27-28 Confirmation of places after redistribution, phase II (the platform closes on 28 July at 24:00 hrs)
- 30 Posting final results
- 30.07 Submission of original documents
- 30.08

SEPTEMBER

- 7-9 Submitting applications online (the platform closes on 9 September at 24:00 hrs)
- 10 Posting examination results
- 10-11 Submitting examination appeals and reporting observations (errors, omissions, etc.) (24 hours after the test results are posted)
- 11 Posting initial results (by specialisations)
- 12 Confirmation of places and applying for redistribution of places, phase I (the platform closes on 12 September at 24:00 hrs)
- 13 Redistribution of unused places after phase I
- 14 Confirmation of places after redistribution, phase II (the platform closes on 14 September at 24:00 hrs)
- 16 Posting final results
- 16-25 Submission of original documents

Communication Sciences Field

- 15.1 Specialisation **COMMUNICATION AND PUBLIC RELATIONS** - 3 years, full time - *in Romanian, Hungarian, German* - 3 years, distance education - *in Romanian*
- 15.2 Specialisation **JOURNALISM** - 3 years, full time - *in Romanian, Hungarian and English* - 3 years, distance education - *in Romanian*
- 15.3 Specialisation **ADVERTISING** - 3 years, full time - *in Romanian*
- 15.4 Specialisation **DIGITAL MEDIA** - 3 years, full time - *in Romanian and Hungarian*

Administrative Sciences Field

- 15.5 Specialisation **PUBLIC ADMINISTRATION** - 3 years, full time - *in Romanian and Hungarian* - 3 years, distance education - *in Romanian*
- 15.6 Specialisation **PUBLIC ADMINISTRATION** in Satu Mare - 3 years, distance education - *in Romanian*
- 15.7 Specialisation **PUBLIC ADMINISTRATION** in Bistriţa - 3 years, full time - *in Romanian* - 3 years, distance education - *in Romanian*
- 15.8 Specialisation **PUBLIC ADMINISTRATION** in Reşiţa - 3 years, full time - *in Romanian* - 3 years, distance education - *in Romanian*
- 15.9 Specialisation **PUBLIC HEALTH** - 3 years, full time - *in Romanian and English*
- 15.10 Specialisation **SOCIAL DATA SCIENCE** - 3 years, full time - *in Romanian*

Political Science Field

- 15.11 Specialisation **POLITICAL SCIENCE** - 3 years, full time - *in Romanian and English*

SELECTION CRITERIA FOR ALL SPECIALISATIONS

Phase I (preliminary):

- Motivation letter written in the teaching language of the degree programme, graded on a Pass/Fail basis.
- Candidates applying for degree programmes in languages other than Romanian and Hungarian will sit an interview (English) or a written test (German) where no language certificate is submitted.
- Only successful candidates who Pass this examination will continue to the second phase of admission.

Phase II:

- Candidates admitted after the first (preliminary) phase will be distributed on state funded places and places on tuition or will be on the waiting list according to the score of the baccalaureate exam.
- Places not confirmed by candidates admitted to the second phase will be redistributed to the candidates on the waiting lists, in accordance with their options selected in the application form.

Phase III:

- Candidates will be allocated state funded places or places on tuition or will be rejected.



For the Physical and Sports Education Field

JULY

- 13-17 Submitting applications at the faculty (by 17.07 at 12:00 hrs)
- 19 Posting the list of applicants
- 20-21 Evaluation framework for assessing motor skills
- 22 Posting tests results and reporting observations (errors, omissions, etc.)
- 23 Posting initial results (by specialisations)
- 24-26 In person confirmation of places and submission of original documents, phase I (by 26.07 at 12:00 hrs)
- 27 Redistribution of unused places after phase I
- 28-29 In person confirmation of places following redistribution and submission of original documents, phase II (by 29.07 at 12:00 hrs)
- 30 Posting final results

For the Kinesithrapy Field

JULY

- 13-17 Submitting applications at the faculty (by 17.07 at 12:00 hrs)
- 19 Posting the list of applicants
- 20 Evaluation framework for assessing motor skills
- 21 Multiple choice test in Biology
- 22 Posting examination results
- 22-23 Submitting test appeals and reporting observations (errors, omissions, etc.) (by 23.07 at 12:00 hrs)
- 23 Posting initial results (by specialisations)
- 24-26 In person confirmation of places and submission of original documents, phase I (by 26.07 at 12:00 hrs)
- 27 Redistribution of unused places after phase I
- 28-29 In person confirmation of places following redistribution and submission of original documents, phase II (by 29.07 at 12:00 hrs)
- 30 Posting final results

SEPTEMBER

- 7-9 Submitting applications at the faculty (by 9.09 at 12:00 hrs)
- 10 Posting the list of applicants
- 11-12 Evaluation framework for assessing motor skills
- 12 Posting tests results and reporting observations (errors, omissions, etc.)
- 13 Posting initial results (by specialisations)
- 13-14 In person confirmation of places and submission of original documents, phase I (by 14.09 at 14:00 hrs)
- 15 Redistribution of unused places after phase I
- 15 In person confirmation of places and submission of original documents, phase II (by 15.09 at 14:00 hrs)
- 16 Posting final results

SEPTEMBER

- 7-9 Submitting applications at the faculty (by 9.09 at 12:00 hrs)
- 10 Posting the list of applicants
- 11 Evaluation framework for assessing motor skills
- 12 Multiple choice test in Biology
- 12 Posting examination results
- 12-13 Submitting test appeals and reporting observations (errors, omissions, etc.) (by 13.09 at 12:00 hrs)
- 14 Posting initial results (by specialisations)
- 13-14 In person confirmation of places and submission of original documents, phase I (by 14.09 at 14:00 hrs)
- 15 Redistribution of unused places after phase I
- 15 In person confirmation of places and submission of original documents, phase II (by 15.09 at 14:00 hrs)
- 16 Posting final results

Physical Education and Sport Field

16.1 Specialisation **PHYSICAL AND SPORTS EDUCATION** - 3 years, full time - *in Romanian and Hungarian* - 3 years, part time education - *in Romanian*

16.2 Specialisation **PHYSICAL AND SPORTS EDUCATION** in Bistrița - 3 years, full time - *in Romanian*

16.3 Specialisation **PHYSICAL AND SPORTS EDUCATION** in Reșița - 3 years, full time - *in Romanian*

16.4 Specialisation **SPORT AND HIGH MOTOR SKILLS PERFORMANCE** - 3 years, full time - *in Romanian and Hungarian*

SELECTION CRITERIA

- Evaluation framework for assessing motor skills worth 100% of the admission score.
- Specific criteria for professional athletes is available at <https://sport.ubbcluj.ro/nivel-licenta/>.

Kinesithrapy Field

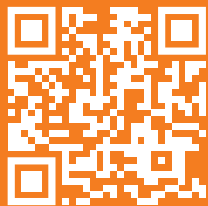
16.5 Specialisation **KINESITHERAPY AND SPECIAL MOTOR FUNCTION*** - 3 years, full time - *in Romanian and Hungarian*

*The degree programme is offered by the Faculty of Medical and Health Sciences, but is run by the Faculty of Physical Education and Sport.

SELECTION CRITERIA

- Evaluation framework for assessing motor skills on a Pass/Fail basis.
- Multiple choice test in Biology worth 100% of the admission score.

ADMITERE:UBBCLUJ.RO



FACULTY OF ORTHODOX THEOLOGY

ot.ubbcluj.ro

f.n. Nicolae Ivan Street,
Cluj-Napoca, 400692
0264-431.005; 0264-594.716
ot@ot.ubbcluj.ro

ADMISSION CALENDAR

JULY

- 14-19 Submitting applications online (the platform closes on 19 July at 12:00 hrs)
- 20 Posting the list of applicants
- 21 Examinations for all specialisations
- 22 Posting examination results
- 22 Reporting observations (errors, omissions, etc.)
- 23 Posting initial results (by specialisations)
- 23-27 Confirmation of places, phase I
- 27 Redistribution of unused places after phase I
- 27-28 Confirmation of places after redistribution, phase II
- 29 Posting final results
- 23-30 Submission of original documents

SEPTEMBER

- 7-9 Submitting applications online (the platform closes on 9 September at 12:00 hrs)
- 9 Posting the list of applicants
- 10 Examinations for all specialisations
- 10 Posting examination results
- 11 Reporting observations (errors, omissions, etc.)
- 12 Posting initial results (by specialisations)
- 12-14 Confirmation of places, phase I
- 15 Redistribution of unused places after phase I
- 15 Confirmation of places after redistribution, phase II
- 16 Posting final results
- 16 Submission of original documents

Theology Field

17.1 Specialisation **ORTHODOX PASTORAL THEOLOGY** - 4 years, full time - *in Romanian*

SELECTION CRITERIA

- Musical skills assessment and vocational interview - preliminary.
- Written test in Fundamental and Dogmatic Theology, with biblical foundation - worth 60% of the admission score.
- Baccalaureate score worth 40% of the admission score.

Theology Field

17.2 Specialisation **ORTHODOX DIDACTIC THEOLOGY** - 3 years, full time - *in Romanian*

17.3 Specialisation **ORTHODOX THEOLOGY - SOCIAL WORK** - 3 years, full time - *in Romanian*

SELECTION CRITERIA

- Oral test in Fundamental and Dogmatic Theology, with biblical foundation - worth 60% of the admission score.
- Baccalaureate score worth 40% of the admission score.

Visual Arts Field

17.4 Specialisation **SACRED ART** - 3 years, full time - *in Romanian*

SELECTION CRITERIA

- Motivational interview and portfolio assessment, worth 60% of the admission score.
- Baccalaureate score worth 40% of the admission score.

FACULTY OF GREEK CATHOLIC THEOLOGY

gct.ubbcluj.ro

26 Moșilor Street,
Cluj-Napoca, 400001
0264-599.579 (Cluj-Napoca); 0258-710.440 (Blaj);
0259-416.953 (Oradea)
gct@ubbcluj.ro

JULY

- 13-21 Submitting applications online (the platform closes on 21 July at 14:00 hrs)
- 22 Posting examination results and reporting observations (errors, omissions, etc.)
- 23 Posting initial results (by specialisations)
- 24 Confirmation of places (the platform closes on 24 July at 14:00 hrs)
- 27 Posting final results
- 27-31.07 Submission of original documents at the and faculty (9:00-15:00 hrs)
- 1-4.09

SEPTEMBER

- 7-13 Submitting applications online (the platform closes on 13 September at 14:00 hrs)
- 14 Posting examination results and reporting observations (errors, omissions, etc.)
- 15 Posting initial results (by specialisations)
- 15 Confirmation of places and submission of original documents at the faculty (the platform closes on 15 September at 16:00 hrs)
- 16 Posting final results

Theology Field

18.1 Specialisation **GREEK CATHOLIC THEOLOGY - SOCIAL WORK** - 3 years, full time - *in Romanian*

18.2 Specialisation **GREEK CATHOLIC DIDACTIC THEOLOGY** - 3 years, full time - *in Romanian*

18.3 Specialisation **GREEK CATHOLIC PASTORAL THEOLOGY** - 4 years, full time - *in Romanian*

18.4 Specialisation **GREEK CATHOLIC PASTORAL THEOLOGY** in Blaj - 4 years, full time - *in Romanian*

18.5 Specialisation **GREEK CATHOLIC PASTORAL THEOLOGY** in Oradea - 4 years, full time - *in Romanian*

SELECTION CRITERIA FOR ALL SPECIALISATIONS

- Motivation letter graded on a Pass/Fail basis.
- Baccalaureate score worth 100% of the admission score



FACULTY OF REFORMED THEOLOGY AND MUSIC

rt.ubbcluj.ro

7 Horea Street,
Cluj-Napoca, 400174
0264-590.723
secretar.rt@ubbcluj.ro

JULY

15-19	Submitting applications online (the platform closes on 19 July at 20:00 hrs)
20	Posting the list of applicants
20-21	Reporting observations (errors, omissions, etc.)
22	Admission exam (where applicable) and posting examination results
22	Posting initial results (by specialisations)
23-24	Confirmation of places (the platform closes on 24 July at 17:00 hrs)
25 and 27	Submission of original documents
28	Posting final results

SEPTEMBER

7-10	Submitting applications online (the platform closes on 10 September at 20:00 hrs)
11	Posting the list of applicants
11	Reporting observations (errors, omissions, etc.)
12	Admission exam (where applicable) and posting examination results
12	Posting initial results (by specialisations)
13-15	Confirmation of places (the platform closes on 15 September at 17:00 hrs)
14-16	Submission of original documents
16	Posting final results

Theology Field

19.1 Specialisation **REFORMED DIDACTIC THEOLOGY** - 3 years, full time - *in Hungarian*

SELECTION CRITERIA

- Motivation letter graded on a Pass/Fail basis.
- Baccalaureate score worth 75% of the admission score.
- Baccalaureate score in a subject in the field of theology (for graduates of theology high schools) or the grade in Romanian language and literature or Hungarian language and literature or the grade in a subject in the field of humanities (upon candidate's choice) - worth 25% of the admission score.

Music Field

19.2 Specialisation **MUSIC** - 3 years, full time - *in Hungarian*

SELECTION CRITERIA

- Test 1: Vocal test (practical) worth 75% of the admission score.
- Test 2: Interview and musical skills assessment graded on a Pass/Fail basis.
- Baccalaureate score worth 25% of the admission score.



FACULTY OF ROMAN CATHOLIC THEOLOGY

rocateo.ubbcluj.ro

5 Iuliu Maniu Street,
Cluj-Napoca, 400095
0264-590.715; 0747-200.876
rocateo@ubbcluj.ro

ADMISSION CALENDAR

JULY

- 10-22 Submitting applications online (the platform closes on 22 July at 14:00 hrs)
- 22 Posting the list of applicants
- 23 Sitting the admission exam (where applicable) and posting examination results
- 23-25 Submitting appeals and reporting observations (errors, omissions, etc.) (by 25 July at 12:00 hrs)
- 25 Posting initial results (by specialisations)
- 23-26 Confirmation of places (the platform closes on 26 July at 12:00 hrs)
- 26 Posting final results
- 26-30 Submission of original documents

SEPTEMBER

- 7-11 Submitting applications online (the platform closes on 11 September at 12:00 hrs)
- 11 Posting the list of applicants
- 12 Sitting the admission exam (where applicable) and posting examination results
- 13-14 Submitting appeals and reporting observations (errors, omissions, etc.) (by 14 September at 12:00 hrs)
- 14 Posting initial results (by specialisations)
- 14-15 Confirmation of places (the platform closes on 15 September at 16:00 hrs)
- 16 Posting final results
- 16-17 Submission of original documents

Theology Field

20.1 Specialisation **ROMAN CATHOLIC DIDACTIC THEOLOGY** - 3 years, full time - *in Hungarian*

SELECTION CRITERIA

- Baccalaureate score worth 50% of the admission score.
- Motivation letter worth 50% of the admission score.

20.2 Specialisation **ROMAN CATHOLIC PASTORAL THEOLOGY** in Alba Iulia - 4 years, full time - *in Hungarian*

SELECTION CRITERIA

- Baccalaureate score worth 50% of the admission score.
- Oral exam worth 50% of the admission score.

NOTE:

- Students who have won first, second, or third prize in the National Roman Catholic Religion Competition "Pe urmele vocației" (In the Footsteps of Vocation) or in the national phase of the Roman Catholic Religion Olympiad in Hungarian in grades 11 or 12 are exempt from the admission test and will receive an admission score of 10.00.
- Students who have competed at least twice in the national phase of the aforementioned Olympiads/competitions are exempt from submitting a letter of motivation and will receive a score of 10.00 for this criterion.



JULY

Single calendar for all majors

- 13-18 Submitting applications online (the platform closes on 18 July at 12:00 hrs)
- 19 Posting the list of applicants
- 20-24 Conducting admission tests by specialisation, as per the detailed calendar
- 24-25 Reporting observations (errors, omissions, etc.), submitting and handling appeals, as per the detailed calendar
- 26 Posting initial results (by specialisations)
- 26-27 Confirmation of places, phase I (the platform closes on 27 July at 10:00 hrs)
- 27 Redistribution of unused places after phase I
- 27-28 Confirmation of places, phase II (the platform closes on 28 July at 10:00 hrs)
- 28 Redistribution of unused places after phase II
- 28-29 Confirmation of places, phase III (the platform closes on 29 July at 10:00 hrs)
- 30 Posting final results
- 26-30 Submission of original documents

SEPTEMBER

- 7-8 Submitting applications online (the platform closes on 8 September at 12:00 hrs)
- 9 Posting the list of applicants
- 10-11 Conducting admission tests by specialisation, as per the detailed calendar
- 12-13 Reporting observations (errors, omissions, etc.), submitting and handling appeals, as per the detailed calendar
- 13 Posting initial results (by specialisations)
- 14 Confirmation of places, phase I (the platform closes on 14 September at 18:00 hrs)
- 15 Redistribution of unused places after phase I
- 15 Confirmation of places, phase II (the platform closes on 15 September at 16:00 hrs)
- 16 Posting final results
- 14-16 Submission of original documents

For the Performing Arts (Acting) specialisation in Romanian

- 20-21 Phase I (preliminary test) and posting results
- 22-24 Phase II (1st test workshop, 2nd test monologue) and posting results
- 25 Reporting observations (errors, omissions, etc.)
- 10 Phase I (preliminary test) and posting results
- 11 Phase II (1st test workshop, 2nd test monologue) and posting results
- 12 Reporting observations (errors, omissions, etc.)

For the Performing Arts (Acting) specialisation in Hungarian

- 20 Phase I (preliminary test) and posting results
- 21-22 Phase II (1st test workshop, 2nd test monologue) and posting results
- 25 Reporting observations (errors, omissions, etc.)
- 10 Phase I (preliminary test) and posting results
- 11 Phase II (1st test workshop, 2nd test monologue) and posting results
- 12 Reporting observations (errors, omissions, etc.)

For the Performing Arts (Directing) specialisation in Romanian

- 20-21 Phase I (preliminary test) and posting results
- 22-23 Phase II (written test, practical test) and posting results
- 25 Reporting observations (errors, omissions, etc.)
- 10 Phase I (preliminary test) and posting results
- 11 Phase II (written test, practical test) and posting results
- 12 Reporting observations (errors, omissions, etc.)

For the Theatre Studies (Theatre Journalism) specialisation in Romanian

- 24 Interview and posting results
- 25 Reporting observations (errors, omissions, etc.)
- 10 Interview and posting results
- 12 Reporting observations (errors, omissions, etc.)

For the Theatre Studies (Theatre Journalism) specialisation in Hungarian

- 23 Interview and posting results
- 25 Reporting observations (errors, omissions, etc.)
- 10 Interview and posting results
- 12 Reporting observations (errors, omissions, etc.)

JULY

For the Cinema, Photography, Media (Film and TV Directing, Multimedia: Sound-Editing, Film and TV Image) specialisation in Romanian

20	Phase I (preliminary test) and posting results	10	Phase I (preliminary test) and posting results
21-22	Phase II (practical test) and posting results	10	Phase II (practical test) and posting results
23	Phase III (written test) and posting results	11	Phase III (written test) and posting results
24	Submitting appeals and reporting observations (errors, omissions, etc.) (by 24 July at 14:00 hrs)	12	Submitting appeals and reporting observations (errors, omissions, etc.) (by 12 September at 12:00 hrs)
25	Handling appeals	13	Handling appeals

For the Cinema, Photography, Media (Film and TV Directing, Multimedia: Sound-Editing, Film and TV Image) specialisation in Hungarian

20-22	Phase I (1st test and 2nd test) and posting results	10	Phase I (1st test and 2nd test) and posting results
23	Phase II (written test) and posting results	11	Phase II (written test) and posting results
24	Submitting appeals and reporting observations (errors, omissions, etc.) (by 24 July at 14:00 hrs)	12	Submitting appeals and reporting observations (errors, omissions, etc.) (by 12 September at 12:00 hrs)
25	Handling appeals	13	Handling appeals

For the Film Studies specialisation

22	Interview and posting results	10	Interview and posting results
23	Written exam and posting examination results	11	Written exam and posting examination results
24	Submitting appeals (by 24 July at 14:00 hrs)	12	Submitting appeals (by 12 September at 12:00 hrs)
25	Handling appeals	13	Handling appeals

SEPTEMBER

NOTE:

- Depending on the number of candidates, the preliminary examination will be held over several days.
- The exact examination schedule will be posted on the faculty website.

Theatre and Performing Arts Field

21.1 Specialisation **PERFORMING ARTS (ACTING)** - 4 years, full time - *in Romanian*

SELECTION CRITERIA

Phase I - Preliminary oral/practical assessment.

- Phase II:**
- Test I. Workshop for improvisation and testing of creative imagination, musical, choreographic and rhythmic skills worth 60% of the admission score;
 - Test II. Monologue performance worth 40% of the admission score.

21.2 Specialisation **PERFORMING ARTS (ACTING)** - 4 years, full time - *in Hungarian*

SELECTION CRITERIA

Phase I - Preliminary oral/practical assessment.

- Phase II:**
- Test 1. Workshop for improvisation, stage movement and music worth 60% of the admission score.
 - Test II. Monologue worth 40% of the admission score.

21.3 Specialisation **PERFORMING ARTS (DIRECTING)** - 4 years, full time - *in Romanian*

SELECTION CRITERIA

Phase I - Preliminary oral/practical assessment.

Phase II - Practical test worth 100% of the admission score.

21.4 Specialisation **THEATRE STUDIES (THEATRE JOURNALISM)** - 3 years, full time - *in Romanian and Hungarian*

SELECTION CRITERIA

For the Romanian line of study:

- Motivation letter worth 20% of the admission score.
- Oral assessment (interview) worth 20% of the admission score;
- Baccalaureate score worth 60% of the admission score.

For the Hungarian line of study:

- Motivation letter worth 50% of the admission score.
- Oral assessment (interview) worth 50% of the admission score;

Cinema and Media Field

21.5 Specialisation **CINEMA, PHOTOGRAPHY, MEDIA (Film and TV Directing)** - 3 years, full time - *in Romanian and Hungarian*

21.6 Specialisation **CINEMA, PHOTOGRAPHY, MEDIA (Multimedia: sound-editing)** - 3 years, full time - *in Romanian and Hungarian*

21.7 Specialisation **CINEMA, PHOTOGRAPHY, MEDIA (Film and TV Image)** - 3 years, full time - *in Romanian and Hungarian*

SELECTION CRITERIA

For the Romanian line of study:

Phase I - Presentation and discussion of personal portfolio, graded on a Pass/Fail basis, and subject-specific practical test, worth 70% of the admission score;

Phase II - Film analysis written test, based on the list of films and bibliography indicated, worth 30% of the admission score.

For the Hungarian line of study:

Phase I - Presentation and discussion of personal portfolio, worth 35% of the admission score;

Phase II - Practical test of skills worth 35% of the admission score;

Phase III - Film analysis written test, based on the list of films and bibliography indicated, worth 30% of the admission score.

21.8 Specialisation **FILM STUDIES** - 3 years, full time education - *in Romanian*

SELECTION CRITERIA

- Oral assessment (interview) worth 30% of the admission score;
- Film analysis written test, based on the list of films and bibliography indicated, worth 70% of the admission score.



FACULTY OF ENGINEERING

(at the UBB Reșița University Centre)

eng.ubbcluj.ro

1-4 Traian Vuia Square,
Reșița, 320085
0730-583.012, 0374-810.706
admitere.eng@ubbcluj.ro

ADMISSION CALENDAR

JULY

- 13-24 Submitting applications online (the platform closes on 24 July at 20:00 hrs)
- 25 Reporting observations (errors, omissions, etc.) and submitting appeals (by 25 July at 16:00 hrs)
- 26 Handling appeals and posting initial results (by specialisations)
- 27-28 Confirmation of places, phase I (the platform closes on 28 July at 14:00 hrs)
- 28 Redistribution of unused places after phase I
- 29 Confirmation of places after redistribution, phase II (the platform closes on 29 July at 12:00 hrs)
- 30 Posting final results
- 27-30 Submission of original documents

SEPTEMBER

- 7-11 Submitting applications online (the platform closes on 11 September at 20:00 hrs)
- 12 Reporting observations (errors, omissions, etc.) and submitting appeals (by 12 September at 16:00 hrs)
- 13 Handling appeals and posting initial results (by specialisations)
- 14-15 Confirmation of places, phase I (the platform closes on 15 September at 14:00 hrs)
- 15 Redistribution of unused places after phase I
- 16 Confirmation of places after redistribution, phase II (the platform closes on 16 September at 16:00 hrs)
- 16 Posting final results
- 14-16 Submission of original documents

Mechanical Engineering Field

22.1 Specialisation **MECHANICAL ENGINEERING** - 4 years, full time and full time dual degree* - *in Romanian*

Electrical Engineering Field

22.2 Specialisation **ELECTROMECHANICS** - 4 years, full time - *in Romanian*

22.3 Specialisation **ELECTRICAL ENGINEERING AND APPLIED COMPUTING** - 4 years, full time and full time dual degree* - *in Romanian*

Applied Engineering Sciences Field

22.4 Specialisation **INDUSTRIAL INFORMATICS** - 4 years, full time - *in Romanian*

22.5 Specialisation **MEDICAL ENGINEERING****- 4 years, full time - *in Romanian*

***The degree programme is offered by the Faculty of Medical and Health Sciences, but is run by the Faculty of Engineering.*

SELECTION CRITERIA FOR ALL SPECIALISATIONS

- Motivation letter graded on a Pass/Fail basis. Results are published on the admission platform
- The arithmetic mean with two decimal points of the second and third written tests of the baccalaureate exam (assessment tailored to the field of study, programme, specialisation, or assessment of choice based on the field of study, programme, specialisation), worth 100% of the admission score.
- Applicants who have won first, second, or third place in international Olympiads or school competitions acknowledged by the Ministry of Education and Research over the past four years, or first place in national Olympiads funded by the Ministry of Education and Research, are eligible for admission with a score of 10.00.

*Under Higher Education Law no. 199/2023, university degree programmes may be organised in consortia for dual education. In the dual system of higher education, the learning, teaching, practical, research and assessment activities are equally distributed between the university and the economic operators, subject to an agreement signed between them. The higher education institution conducts learning, teaching and assessment activities, while the economic operators provide work-based learning activities and hands-on training of students. In order to provide dual degree programmes Babeș-Bolyai University has established collaboration protocols with relevant economic partners in their field of activity, thus providing its graduates with a competitive advantage on the labour market.

FACULTY OF MEDICAL AND HEALTH SCIENCES

medical-health.ubbcluj.ro

9 Clinicilor Street, Cluj-Napoca
0264-591.134
medical-health@ubbcluj.ro

JULY

For the Physics Field

- 14-19 Submitting applications online (the platform closes on 19 July at 14:00 hrs)
- 14-19 Reporting observations (errors, omissions, etc.) (by 19 July at 14:00 hrs)
- 20 Posting the list of applicants
- 21 Admission exam and posting examination results
- 21-22 Submitting appeals and posting initial results (by specialisations)
- 23-27 Confirmation of places and submitting documents in original, phase I (business days)
- 28 Redistribution of unused places after phase I
- 29 Confirmation of places following redistribution, phase II
- 30 Posting final results

For the Applied Engineering Sciences Field

- 13-24 Submitting applications online (the platform closes on 24 July at 20:00 hrs)
- 25 Reporting observations (errors, omissions, etc.) and submitting appeals (by 25 July at 16:00 hrs)
- 26 Handling appeals and posting initial results (by specialisations)
- 27-28 Confirmation of places, phase I (the platform closes on 28 July at 14:00 hrs)
- 28 Redistribution of unused places after phase I
- 29 Confirmation of places after redistribution, phase II (the platform closes on 29 July at 12:00 hrs)
- 30 Posting final results
- 27-30 Submission of original documents

For the Kinesitherapy Field

- 13-17 Submitting applications at the faculty (by 17 July at 12:00 hrs)
- 19 Posting the list of applicants
- 20 Evaluation framework for assessing motor skills
- 21 Multiple choice test in Biology
- 22 Posting examination results
- 22-23 Submitting test appeals and reporting observations (errors, omissions, etc.) (by 23 July at 12:00 hrs)
- 23 Posting initial results (by specialisations)
- 24-26 In person confirmation of places and submission of original documents, phase I (by 26 July at 12:00 hrs)
- 27 Redistribution of unused places after phase I
- 28-29 In person confirmation of places following redistribution and submission of original documents, phase II (by 29 July at 12:00 hrs)
- 30 Posting final results

SEPTEMBER

- 7-9 Submitting applications online (the platform closes on 9 September at 12:00 hrs)
- 7-9 Reporting observations (errors, omissions, etc.) (by 9 September at 12:00 hrs)
- 9 Posting the list of applicants
- 10 Admission exam and posting examination results
- 10-11 Submitting appeals and posting initial results (by specialisations)
- 12-14 Confirmation of places and submitting documents in original, phase I (business days)
- 14 Redistribution of unused places after phase I
- 14-15 Confirmation of places following redistribution, phase II
- 16 Posting final results

- 7-11 Submitting applications online (the platform closes on 11 September at 20:00 hrs)
- 12 Reporting observations (errors, omissions, etc.) and submitting appeals (by 12 September at 16:00 hrs)
- 13 Handling appeals and posting initial results (by specialisations)
- 14-15 Confirmation of places, phase I (the platform closes on 15 September at 14:00 hrs)
- 15 Redistribution of unused places after phase I
- 16 Confirmation of places after redistribution, phase II (the platform closes on 16 September at 16:00 hrs)
- 16 Posting final results
- 14-16 Submission of original documents

- 7-9 Submitting applications at the faculty (by 9 September at 12:00 hrs)
- 10 Posting the list of applicants
- 11 Evaluation framework for assessing motor skills
- 12 Multiple choice test in Biology
- 12 Posting examination results
- 12-13 Submitting test appeals and reporting observations (errors, omissions, etc.) (by 13 September at 12:00 hrs)
- 14 Posting initial results (by specialisations)
- 13-14 In person confirmation of places and submission of original documents, phase I (by 14 September at 14:00 hrs)
- 15 Redistribution of unused places after phase I
- 15 In person confirmation of places and submission of original documents, phase II (by 15 September at 14:00 hrs)
- 16 Posting final results

JULY

For the Health Field

13-18	Submitting applications online (the platform closes on 18 July at 16:00 hrs)
19	Posting the list of applicants
20	Admission exam
21-23	Posting admission test results, submitting appeals, reporting observations (errors, omissions, etc.) (by 23 July at 16:00 hrs)
23	Posting initial results (by specialisations)
24-26	Confirmation of places, phase I (the platform closes on 26 July at 16:00 hrs)
27	Redistribution of unused places after phase I
28-29	Confirmation of places after redistribution, phase II (the platform closes on 29 July at 16:00 hrs)
24-30	Submission of original documents
30	Posting final results

SEPTEMBER

7-10	Submitting applications at the faculty (the platform closes on 10 September at 14:00 hrs)
10	Posting the list of applicants
11	Admission exam
12-13	Posting admission test results, submitting appeals, reporting observations (errors, omissions, etc.) (by 13 September at 12:00 hrs)
13	Posting initial results (by specialisations)
14-15	Confirmation of places, phase I (the platform closes on 15 September at 12:00 hrs)
15	Redistribution of unused places after phase I
16	Confirmation of places after redistribution, phase II (the platform closes on 16 September at 12:00 hrs)
14-16	Submission of original documents
16	Posting final results

Physics Field

23.1 Specialisation **MEDICAL PHYSICS***- 3 years, full time - *in Romanian*

*The degree programme is offered by the Faculty of Medical and Health Sciences, but is run by the Faculty of Physics.

SELECTION CRITERIA

- High school graduates holding a baccalaureate diploma will sit a written examination and the admission score will be calculated according to the following algorithm:

$$\text{ADMISSION SCORE} = 0.5 \times \text{BACCALAUREATE SCORE} + 0.5 \times \text{ADMISSION TEST SCORE}$$

For the BACCALAUREATE SCORE the candidate can opt for one of the following: the baccalaureate average score or the baccalaureate exam grade in physics, informatics, or mathematics.

Applied Engineering Sciences Field

23.2 Specialisation **MEDICAL ENGINEERING****- 4 years, full time - *in Romanian*

**The degree programme is offered by the Faculty of Medical and Health Sciences, but is run by the Faculty of Engineering.

SELECTION CRITERIA

- Motivation letter graded on a Pass/Fail basis. Results are published on the admission platform
- The arithmetic mean with two decimal points of the second and third written tests of the baccalaureate exam (assessment tailored to the field of study, programme, specialisation, or assessment of choice based on the field of study, programme, specialisation), worth 100% of the admission score.
- Applicants who have won first, second, or third place in international Olympiads or school competitions acknowledged by the Ministry of Education and Research in the previous four years, or first place in national Olympiads funded by the Ministry of Education and Research, are eligible for admission with a score of 10.00.

Kinesitherapy Field

23.3 Specialisation **KINESITHERAPY AND SPECIAL MOTOR FUNCTION***** - 3 years, full time - *in Romanian and Hungarian*

***The degree programme is offered by the Faculty of Medical and Health Sciences, but is run by the Faculty of Physical Education and Sport.

SELECTION CRITERIA

- Evaluation framework for assessing motor skills on a Pass/Fail basis.
- Multiple choice test in biology worth 100% of the admission score.

Health Field****

23.4 Specialisation **PODIATRY** - 4 years, full time - *in Romanian*

23.5 Specialisation **NUTRITION AND DIET** - 3 years, full time - *in Romanian and Hungarian*

SELECTION CRITERIA

- Baccalaureate score worth 25% of the admission score.
- Written test in Biology worth 75% of the admission score.

****Admission for these programmes is subject to provisional accreditation by ARACIS and publication in a Government Decision.

Pedagogical Module (Level I - first phase)

The first phase of training consists of two primary components:

- psycho-pedagogical, didactic, and practical training provided by DPPD;
- specialised training provided by the faculties.

One must complete the two components of training in order to become a teacher (psycho-pedagogical, didactic, practical and specialised training).

Successful completion of the psycho-pedagogical training programme Level I entitles you to work as a teacher in mandatory pre-university education, based on the specialisation obtained through the bachelor's degree.

Admission to the Level I psycho-pedagogical training programme will be made exclusively online upon confirmation of place at the faculty.

A motivation essay written in the language of instruction of the Pedagogical module (Romanian, Hungarian or German) is required for admission to the psycho-pedagogical training programme Level I.

Candidates enrolled in an undergraduate programme on a state-funded place will benefit of state funding to study the Pedagogical module courses.

Candidates enrolled in an undergraduate programme on a tuition-paying basis will study the Pedagogical module courses on tuition.



ADMITERE.UBBCLUJ.RO



N O S T E P H A N V S

FIND OUT
MORE

